



RESPONSIBILITY | INTEGRITY | CREATIVITY

ABOUT US

Aiming on metal can solutions, reducing customers' production cost and improving product level, RIC Package provide can component for food cans, industrial cans and other metal cans. RIC Package wishes to solve all demands in the metal package industry from global market.

Customer First is the value of RIC Package. Since the first minute contacting RIC team, inquiry our products, order processing and quality control, our people always treat your concern as the most urgent requirement; And RIC Package can make 100% guarantee for all product quality, compensate you once quality defect.

By quite short production time and sea transportation time, all prime quality can components will arrive at your warehouse, saving your time, financial stress and production scrap waste in tinplate booking, cutting, printing & coating and stamping; Using all prime quality tinplate from China, by full automatic machine line, each lot product quality can be uniformed, our job can help you focus on brand establishing and market developing, by asset-light firms.

Strict quality control, high speed and high tech automatic machine line, prime quality tinplate and automatic inspection machine matching, assure quality level. Stable and strong packing is valued most by our team: each piece of product will be in fine condition at your warehouse.

RIC Package team has experienced exporting job, can meet your needs timely, provide customized solutions for each customer.

"Responsibility, Integrity, Creativity" is our name and spirit that drives us, RIC Package devote ourselves to better service in metal package industry, providing more economical solutions from China.







SUPPORT 100%

OUR SERVICES



- 01 Coating, Laminating and Printing available as per your request;
- 02 Molds can be customized according to your samples and designs, mold cost could be on our account;
- 03 Packing method and Labels as per your request;
- 04 Long term Contact: Long term contact is accepted by partial shipment.
- 05 Samples free of cost for your testing.



OUR ADVANTAGE

- Automatic production equipment
- High production capacity
- Accept annual orders
- Full size
- Fast delivery
- Full-size product customization service

EASY OPEN ENDS

Specification(unit:mm)

Size	Can Diameter	Chuck Diameter	Coating Available
200	50	49.50	Gold Lacquer Clear Lacquer Aluminum Paste White Coating Buff Coating BPA Free BPA NI
202	52	51.80	
211	65	64.90	
214	70	69.90	
300	73	72.16	
305	80	80.30	
307	83	82.37	
401	99	97.73	
603	153	153.4	





BOTTOM ENDS

Specification(unit:mm)

Size	Can Diameter	Chuck Diameter	Coating Available
200	50	49.27	Gold Lacquer Clear Lacquer Aluminum Paste White Coating Buff Coating BPA Free BPA NI
202	52	51.99	
209	62	61.90	
211	65	65.00	
214	70	69.20	
300	73	72.57	
305	80	79.98	
307	83	82.96	
315	95	94.86	
401	99	98.60	
502	127	126.05	
603	153	153.04	



PEEL OFF ENDS

Specification(unit:mm)

For Dry food

Size	113	202	206	209	211	300	305
Can Diameter	46mm	52mm	57mm	62.5mm	65mm	73mm	80mm
Size	307	309	401	502	502D	603	701
Can Diameter	83mm	93mm	99mm	126mm	126mm	153mm	177mm



For Sterilization food

Size	Chuck Diameter	Ring material	Foil	Usage
209	63mm	Aluminum	Transparent film or Aluminum foil	Tomato paste Fish Lunch meat Others
211	65mm	Aluminum		
300	73mm	Aluminum		
307	83mm	Aluminum, TFS		
401	99mm	Aluminum, TFS, ETP		



CYLINDRICAL CAN COMPONENTS

Specification(unit:mm)

Size	Chuck Diameter	Tightness	Coating Available
307	83	Single & Double	Clear Lacquer Gold Lacquer White Lacquer Grey Coating Buff Coating Color Printing
401	99	Double	
404	105	Double	
404	108	Double	
502	126	Double	
603	152/153/155/158	Double	
610	163/165	Double	
700	171.30	Double	
700	176.00	Double	



PAIL CAN COMPONENTS

Pail can components, including lid and bottom, which used for paints.
Suitable for 10L and 18-20L pail can, inside can be Gold lacquer and plain,
outside white lacquer.

Specification(unit:mm)

Capacity	Chuck Diameter	Lug Shape	Coating Available
10 Litre	233	Straight	Clear Lacquer Gold Lacquer White Lacquer Grey Coating Buff Coating Color Printing
16 Litre	266	Straight	
18-20 Litre	283	Straight	
18-20 Litre	283	Crown	



DRUM CAN COMPONENTS

Drum can components, including lid and bottom, which used for paints.
Suitable for 10L and 18-20L drum can.

Specification(unit:mm)

Volume	Can Part	Chuck Diameter	Countersink Diameter
10L	Top	222	11
10L	Bottom	227.5	7
10L	Top	222	8
10L	Bottom	222	7.5
10L	Top	233	8.5
10-20L	Hoop Drum Top	283	10.5



BRAKE FLUID CAN COMPONENTS

Brake fluid can component are widely used in motor oil cans, painting cans, lubricating oil cans and other related tin cans.

Brake fluid can components have four parts, including screw caps, cone tops, plastic seals and bottoms.

Size	56mm	65mm	84mm	99mm	108mm
------	------	------	------	------	-------



OTHERS

Square can components:

Square can components for paints, including 1L to 18L, are widely used for different chemical product packing; Our team provide customized and standard can lids and bottoms, different coating and printing available to satisfy your special requirements.

Aerosol can components:

Aerosol can components, cone and dome, main size is 52mm and 65mm. Suitable for insecticide spray cans, Moisturizing spray can, Sunscreen spray can, Fixed spray can, Cleaner spray can, Lubricating oil spray can etc.

Square can components(unit:mm)

Volume	Dimension	Countersink Diameter
1L	124*58	3.6
3L	166*86	3
4L	164*102	3.6
4L	166*103	3.5
5L	174*107	3.6
18L	234*234	3.8
18L	232*232	3.8



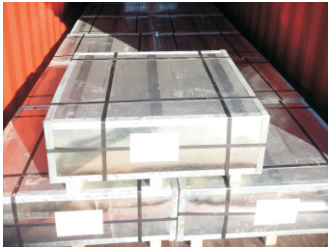
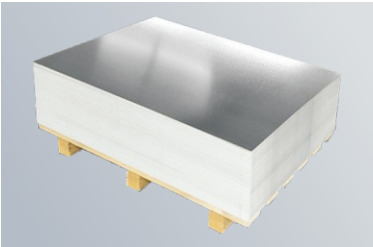
Aerosol can components(unit:mm)

Size	Out Diameter	Countersink Diameter	Thickness	Deform Pressure	Burst Pressure
52 Cone	57.75	5.05	0.35	1.9Mpa	2.1MPa
65 Cone	70.2	5.05	0.43	1.9Mpa	2.1MPa
52 Dome	59.8	2.65	0.32	1.9Mpa	2.1MPa
65 Dome	72.45	2.65	0.4	1.9Mpa	2.1MPa



Tinplate are used in the field of metal package or can making, like paint can,aerosol can and different food can production. And also popular in battery, electric cable and other industries. Thickness from 0.14mm to 0.50mm, width and length from 600mm to 1200mm.

Standard	GB/T2520	En10202	JIS G3303	ASTMA657M
Thickness	0.14-0.50mm(30.003 mm)			
Width	600-1000mm(+3/-0 mm)			
Length	600-1200mm(+3/-0 mm)			
Tin Coating	1.0, 2.0, 2.8, 5.6, 8.4 grams/m ²			
Cr Coating	110-130mg/m ²			
Temper	T1, T2, T3, T4, T5, DR8, DR9/BA, CA			
Surface	Bright	Stone	Silver	Matte
Roughness	≤0.35Qm Ra	0.25-0.60Qm Ra	≥0.90Qm Ra	Various
Coating(OP)	Clear Lacquer	Gold Lacquer	White Lacquer	
Printing(OP)	4 color printing	6 color printing	BPA Free	2piece Can Printing



PRODUCTION EQUIPMENT





www.ricpackage.com 

CHANGZHOU RIC PACKAGE CO., LTD

Tel/Fax: +86 519 85807939

WhatsApp: +86 18651987622

Email: sales@ricpackage.com

Address: A2006 WTC, WUJIN, CHANGZHOU, JIANGSU, CHINA

ZIP CODE: 213176